

Insulation Coupler/Reducer PO

Insulation kit for insulating connections of Flexalen® 600 pre-insulated pipe systems on site



Design

Heat shrinkable sliding socket

Polyolefin Insulation

Shrinkable sleeves



Required Tools

Cleaner

Tissues

Emery cloth

Gas burner

Tent (depending on weather conditions)

Application Instruction

Application conditions and pipe preparation

- Ambient temperature: +5 to +40°C
- No rainy or windy (≥ 3 bfr / 3.4-5.4 m/s) weather conditions
- Service pipe and casing pipe are free from dirt and condensation

use a tent to create correct conditions if required



01. Slide the heat-shrinkable sliding socket and the heat-shrinkable sleeves onto the pipe ends.



02. Install the rubber end caps on both ends of the pipe. Cut the service pipes to length and make sure that the sliding socket covers the entire joining area including rubber end caps. Mark the position on the casing pipe on both sides.



03. Secure the fit of the rubber end cap only on the service pipe(s) by mounting cable ties on the caps' notches intended for this purpose. Cut off excess length of the zip ties.



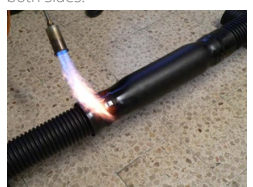
04. After joining the service pipe,, adjust the length of the insulation suitably.



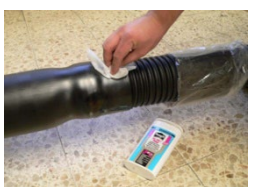
05. Fix the insulation with the enclosed zip ties or use sticky tape (not included).



06. Clean the rubber end caps and the free ends of the casing pipe at the transition area.



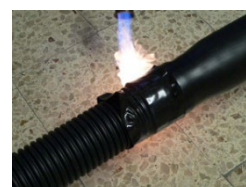
07. Unpack shrinkable socket and center it over the socket connection. Shrink the socket at both ends with a soft yellow flame until the socket is shrunk to the rubber end caps and let it cool down.



08. Clean both ends of the shrinkable socket and the casing pipe at the shrink area with plastic cleaner. Grind both ends of the shrink sleeve (not the corrugated casing pipe) with emery cloth.



09. Remove the packaging and protective foil from the shrink sleeves and center them exactly over the two transition areas shrink sleeve/casing pipe.



10. Shrink both sleeves with a soft yellow flame from the center towards the edges. Take special care when shrinking on the corrugated casing pipe to avoid damage due to overheating.

Disclaimer

All recommendations and information provided on this data sheet are based on our knowledge and experience. Product specifications are intended as guidelines. Since conditions of service are beyond our control, users must satisfy themselves that products are suitable for the intended use. No guarantee or warranty is given or implied or that any use of the products will not infringe rights belonging to other parties. We reserve the right to change product design and properties without notification.