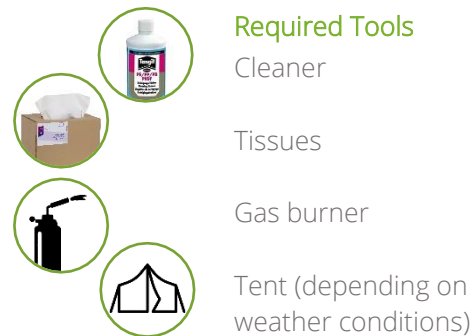
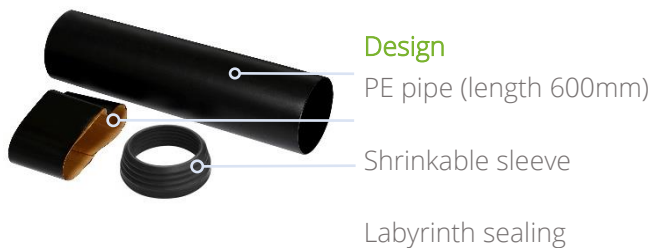


Wall Entry Sealing Kit

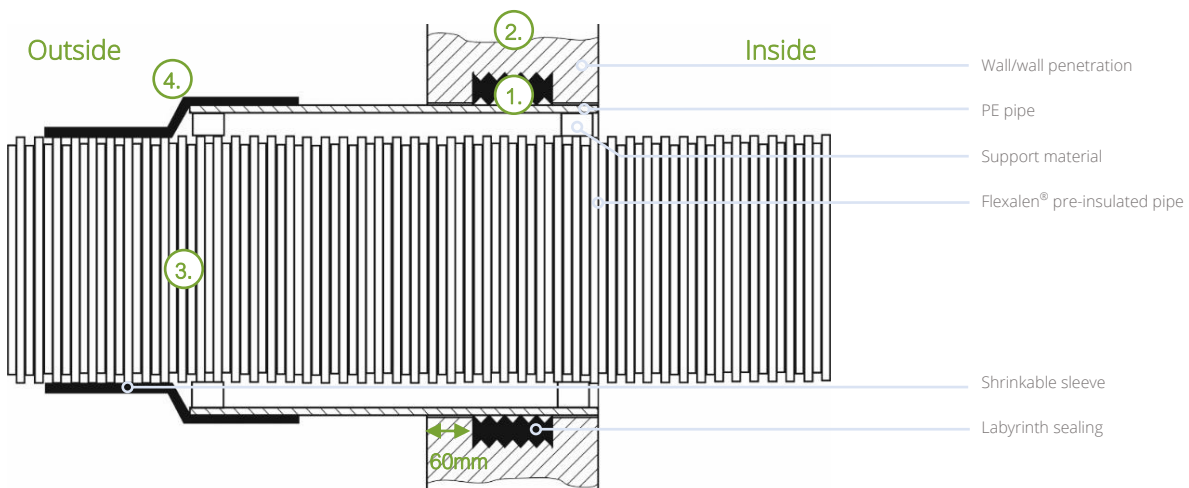
Installation kit for wall entries of pre-insulated pipes Flexalen®, suitable for up to 0.5 bar water pressure



Application Instruction

Application conditions and pipe preparation

- Ambient temperature: +5 to +40°C
 - No rainy or windy (≥ 3 bfr / 3.4-5.4 m/s) weather conditions
 - Wall / foundation must be strong enough for the required hole for the labyrinth sealing
 - Flexalen® casing pipe and PE pipe are undamaged and free from dirt and moisture
- } use a tent to create correct conditions if required



- Clean the PE pipe and slide the labyrinth seal over the clean pipe. Slide it through the wall penetration and position it centrally with a horizontal distance of the wall seal from the outside wall of approx. 60 mm.
- To seal the wall penetration, backfill the PE pipe and labyrinth seal centrally positioned with commercially available swelling mortar (concrete).
- After concrete has hardened slide the shrink sleeve over the Flexalen pipe and then slide the pipe through the PE pipe into the building. If necessary, use support material to center the Flexalen pipe in the PE pipe.
- Unpack shrink sleeve and position it centered over the transition pre-insulated pipe to PE pipe. Shrink it with a soft yellow flame from the middle towards the edges.

Attention: only use support material that does not damage the casing!

Disclaimer

All recommendations and information provided on this instruction leaflet are based on our knowledge and experience. Product specifications are intended as guidelines. Since conditions of service are beyond our control, users must satisfy themselves that products are suitable for the intended use. No guarantee or warranty is given or implied or that any use of products will not infringe rights belonging to other parties. We reserve the right to change product design and properties without notification.

